



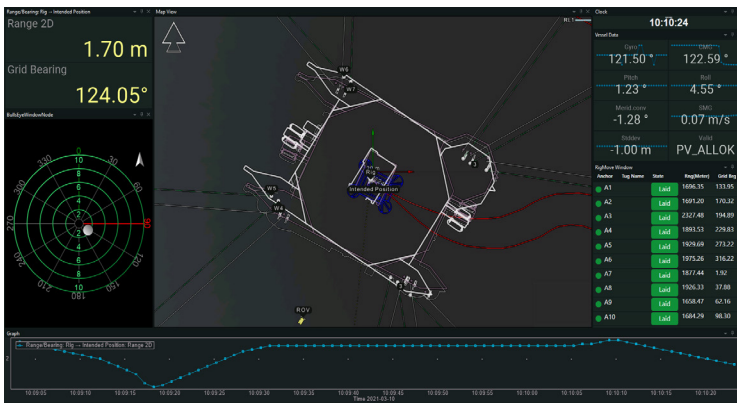
iMON®

Robust Module for Online Rig Position Visualisation and Rig Crawl Calculations During Drilling Operations

The iMON® position monitoring system is a single computer system to assist the rig crew with online rig position, visualisations and rig-crawl calculations during drilling operations.

The system offers a graphic display including (but not limited to):

- Pipelines
- Waypoints
- Numeric object position
- Range and bearings calculations
- Manual measurements in map display
- Anchor data
- Online rig-crawl calculations
- Alarms



Rig Helmsman's Display

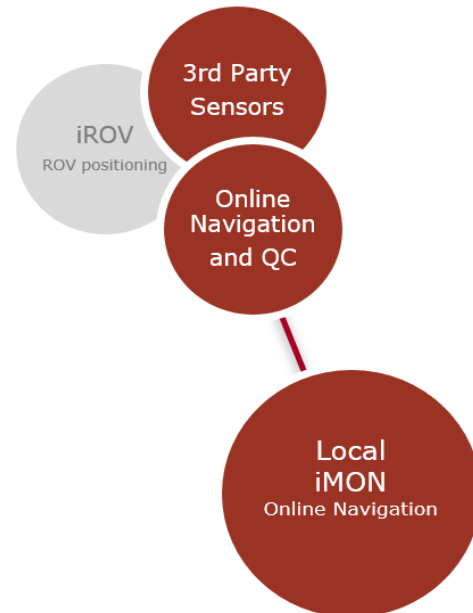
iMON® Vessel Positioning Suite:

Online Navigation System

- Eiva NaviPac online navigation system (single system)
- 2 x LCD displays
- Printers
- Rig gyro interface
- Rig MRU interface
- Rig USBL interface
- Further options available

GNSS Position Options

- C-Nav C²/C³ (< 0.1m horizontal position accuracy 95%)
- Veripos Ultra²/Apex⁵ (< 0.1m horizontal position accuracy 95%)
- Veripos Std/Std+ (< 1.5m horizontal position accuracy 95%)



Extensions to iMON®

Remote Operations

- iCONTROL® - Secure remote vessel access
- iROCC – Remote Operation Control Centre
- iMON® Remote QC (Requires iCONTROL®)

Rig & Mooring

- Anchor handling system
- Online and offline catenary calculations

Miscellaneous

- Additional client helmsman's displays
- iROV® - ROV interface and monitoring
- Video presentation and storage
- Electronic charts
- 3D online suite

Documentation

- Survey procedure
- Survey data processing and reporting
- Geodetic consultancy

NORWAY
iSURVEY Group AS
iSURVEY AS
Billingstadsletta 14
NO-1396 Billingstad
Norway

+47 4541 4100
norway@isurvey-group.com

sales@isurvey-group.com

UNITED KINGDOM
iSURVEY Offshore Limited
7 Kingshill Park
Venture Drive, Westhill
Aberdeenshire, AB32 6FU
United Kingdom

+44 (0)1224 418210
uk@isurvey-group.com

SINGAPORE
iSURVEY Pte Ltd
22 Pandan Road
Singapore 609274

+65 6513 0589
singapore@isurvey-group.com

www.isurvey-group.com

